

## HIGHBAY, LOWBAY, PARKING GARAGE

Designed and manufactured of powder-coated, die-cast aluminum, the CLG Series IP66-rated luminaire, with the highly-efficient integrated heat sink and over 1,000 sq. in. + of surface area, will provide superior performance for decades in harsh outdoor and indoor conditions. NSF certification for food and beverage industry applications.



The CLG series comes standard with industry-leading, driver-attuned **40kV** surge suppression and is available with SensaBLE, the energy saving OCC sensor, for use on heights up to 40'.



## AVAILABLE IN 40W THRU 360W

results shown are 5000K, W dispersion

Model Number	Input	Delivered Im/W	Delivered Lumens
CLG-040W-xV-50K	40	118	4,778
CLG-060W-xV-50K	58	131	7,708
CLG-080W-xV-50K	80	121	9,644
CLG-120W-xV-50K	117	135	15,811
CLG-160W-xV-50K	156	123	19,222
CLG-200W-xV-50K	197	120	23,640
CLG-240W-xV-50K	237	121	28,689
CLG-300W-xV-50K	290	126	36,540
CLG-360W-xV-50K	355	131	46,505

Not all CLG configurations are DLC qualified. Please see [designlights.org](http://designlights.org) for details.



use of the SensaBLE will make the CLG Title 24 compliant.

### NETWORK CONTROLS

#### AVAILABLE WITH SensaBLE 2.0

Mesh Network Lighting Controls



Control, Customize, & Crush your clean energy goals, install **SensaBLE 2.0™** the highly capable Bluetooth™ enabled sensor with:



- Zone Creation & Control
- Custom Profile Creation
- Custom Energy Dashboard
- Service Alerts
- Multi-Part Night Lighting Creation
- Photocontrol
- Daylight Harvesting
- High & Low Output Settings
- OCC controls

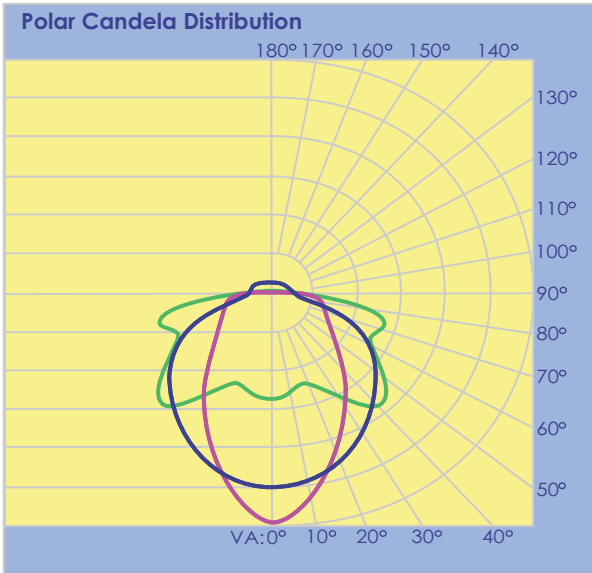


right from your phone\* or unlimited access and control from your desktop. With the power of autonomy and Measurement & Verification built right in.



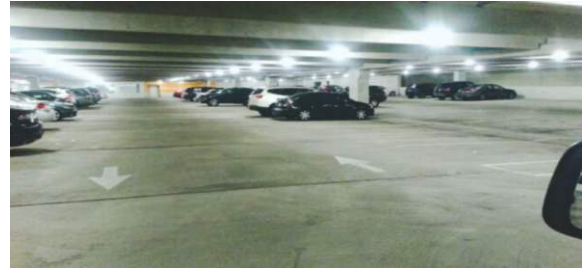
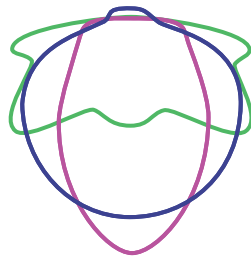
\*mobile app functionality limited to local control and does not offer all features available for desktop single/multi-site cloud control version.

DIMENSIONS	40W - 360W	20" Diameter x 7.5"H
	<b>WEIGHTS:</b> 040W - 160W: 22.5 lbs 200W - 360W: 25.5 lbs	<b>MOUNTING:</b> .75" NPT Opening



**AVAILABLE DISPERSIONS**

- Wide (W)
- Medium (M)
- Narrow (N)



**Available Color Temps (K):** 4000, & 5000

**CRI:** 4000: 83+ 5000: 72+

**Lifetime (L70):** >150,000

**LED Source:** Bridgelux

**Power Supply:** [Inventronics](#) 0-10V, 120-277VAC (480V optional), 50/60Hz dimming driver

**Electrical:** 0.6A max, >90%PF, <11% THD at 277V

**Compliance:** ETL, UL 1598, 1598B, 1598C Suitable for wet locations

**Warranty:** 10 years

**Illuminance at a Distance**

Center Beam fc	Beam Width
2.0ft	1,543.5 fc
4.0ft	385.9 fc
6.0ft	171.5 fc
8.0ft	96.5 fc
10.0ft	61.7 fc
12.0ft	42.9 fc
14.0ft	31.5 fc
16.0ft	24.1 fc
18.0ft	19.1 fc
20.0ft	15.4 fc
22.0ft	12.8 fc
24.0ft	10.7 fc
26.0ft	9.1 fc

Vert. Spread: 162.7  
Horiz. Spread: 162.2

**Sample Order:** CLG-060W-LV-50K-W-SS

MODEL	WATTAGE	VOLTAGE	CCT	DISTRIBUTION	OPTIONAL
CLG	40W 200W 60W 240W 80W 300W 120W 360W 160W	LV = 120-277 HV = 277-480	40K = 4000 50K = 5000	W = Wide M = Medium N = Narrow	SS = Occupancy Sensor EBB = Emergency Backup PC = Photocell COS = Cut-off Shield NEMA = 7-pin Connector

**NOTE:** CLG standard body color is white, all other colors are considered custom; please inquire for pricing.