

The sleek, budget-friendly EWP Series Wallpack is designed to complement the smaller form factor and architectural styling of modern construction.

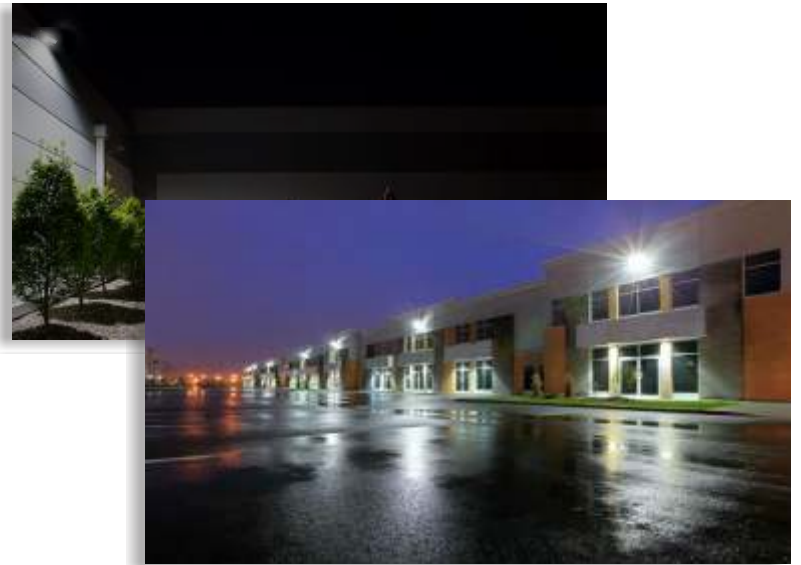


Designed and manufactured of powder-coated, die-cast aluminum, the EWP Series IP65-rated luminaire will provide superior performance for decades in many harsh outdoor environments.

Available in three wattages and two body sizes for 4000K & 5000K.

**Available in 30W, 50W, & 80W**

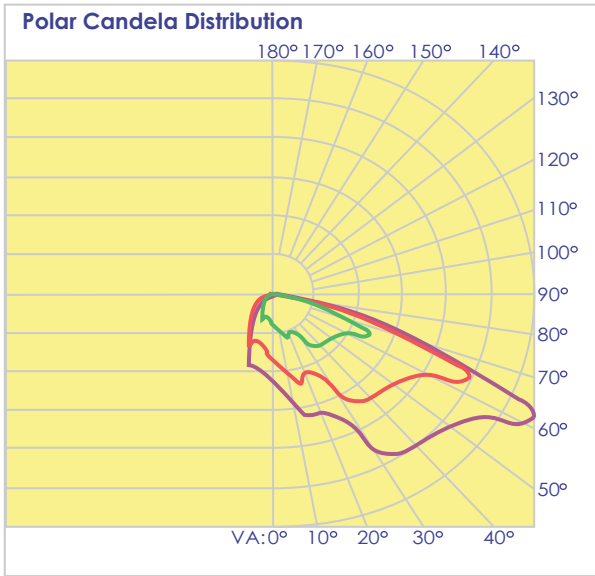
Model Number	Input	Delivered Im/W	Delivered Lumens
EWP-30W-LV-40K	30	140	4,200
EWP-30W-LV-50K	30	140	4,200
EWP-50W-LV-40K	50	140	7,140
EWP-50W-LV-50K	50	140	7,140
EWP-80W-LV-40K	80	140	11,480
EWP-80W-LV-50K	80	140	11,480



50W medium body dimensions shown

<b>LBS</b>	30W - 50W: 4.1 lbs 80W: 9.9 lbs	<b>MNT</b>	MOUNTING: Std. 3 & 4" j-box*
	* knockouts also accommodate surface mount conduit		

<b>DIIMS</b>	30W - 50W	9.25"L x 6.5"D x 4.25"H
	80W	12.75"L x 7.65"D x 5"H



**30W**

**50W**

**80W**

**Available Color Temps (K):** 4000, & 5000

**CRI:** 72+

**Lifetime (L70):** >50,000

**LED Source:** SMD 3030

**Power Supply:** Inventronics 0-10V, 120-277VAC, 50/60Hz continuous dimming driver

**Electrical:** 0.6A max, >90%PF, <11% THD at 277V

**Compliance:** UL 1598  
Suitable for wet locations

**Warranty:** 5 years

**Sample Order:** EWP-50W-LV-40K-T3-BR-PC

MODEL	WATTAGE	VOLTAGE	CCT	OPTIONAL
EWP small body	30W	LV = 120-277	40K = 4000	PC = Photocell*
EWP	50W		50K = 5000	
EWP large body	80W			

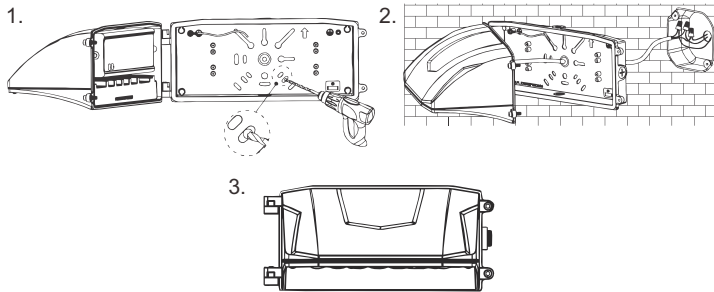


\*Dusk to Dawn photocell available

## Quick Install Guide

### J-box Mounting

1. Remove j-box from wallpack, mount to surface
2. Hang the wallpack on the j-box w/hook and connect power
3. Mount wallpack on j-box and secure with screws on the side



### Surface Mounting

1. Remove plate (a) and mount to surface
2. Hang the wallpack on the plate and connect power
3. Mount wallpack on plate and secure with screws on the side

